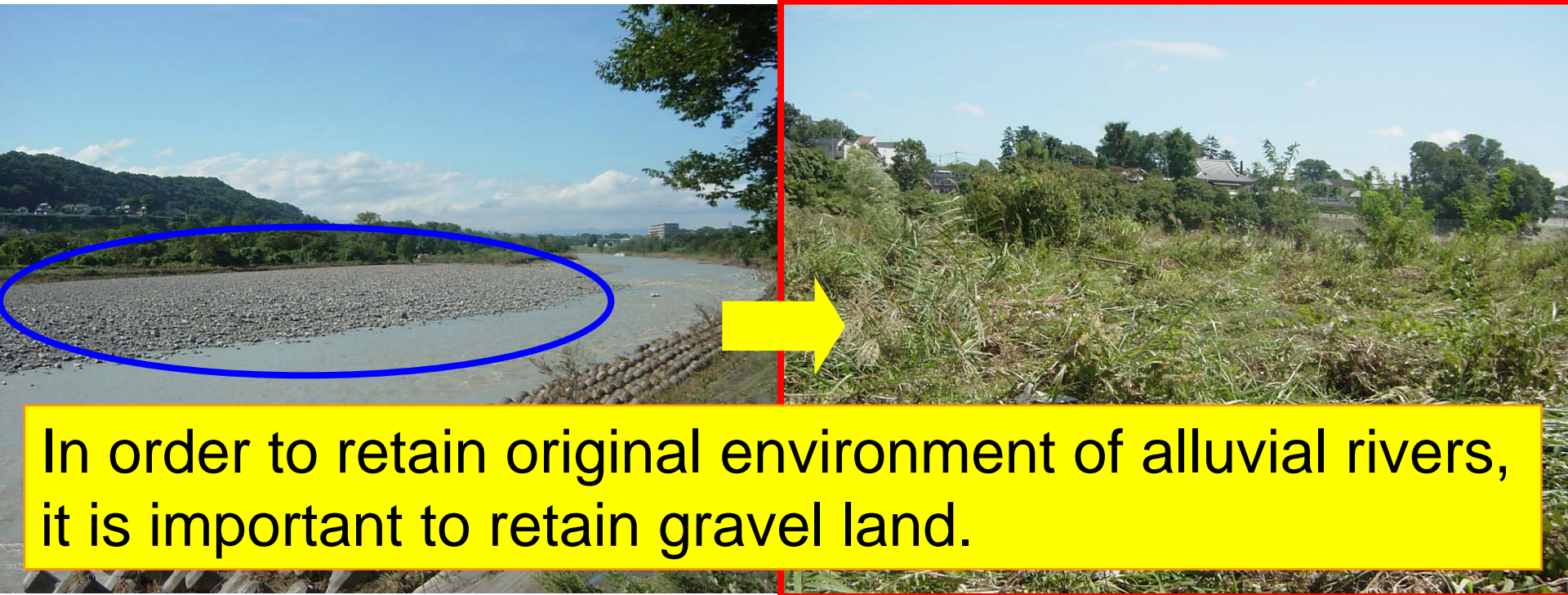


Examination of Maintaining Method of the Gravel Bed River Channel



*Hiroaki FUJIMORI, Takeyoshi CHIBANA
Department of Civil Engineering, The University of Tokyo.*

Background



In order to retain original environment of alluvial rivers, it is important to retain gravel land.



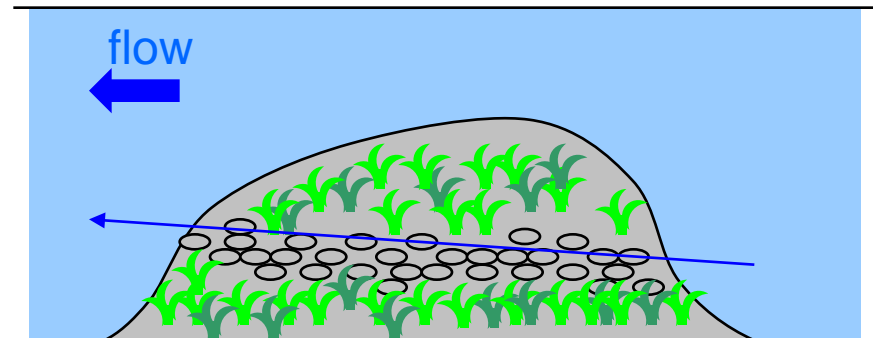
- Frequency of flood decreased by human impact.
- Scenery, environment & eco-system of the river have changed.
 - Plants overgrow. & Gravel land decreased.
- Native species which inhabit gravel land in river are **endangered!**

Artificial gravel land

Shelter for Aster kantoensis



Plane view

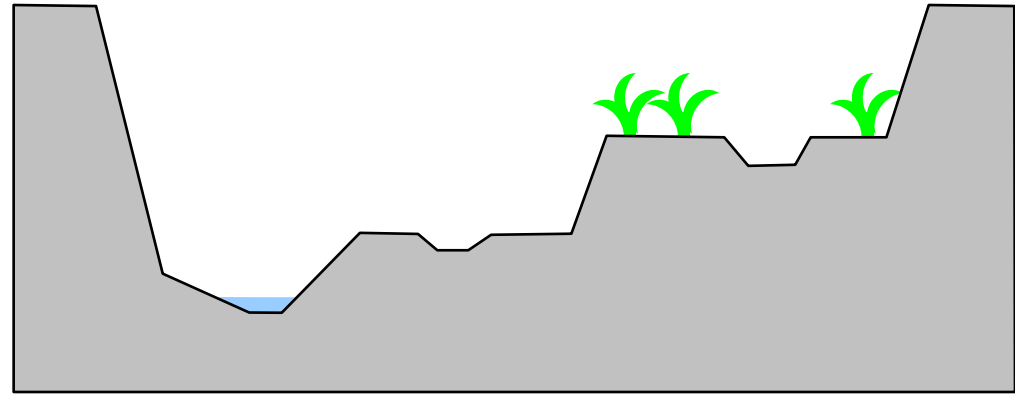


As a emergency measure,
there is a plan to create partial gravel land artificially.
Sustainable gravel land

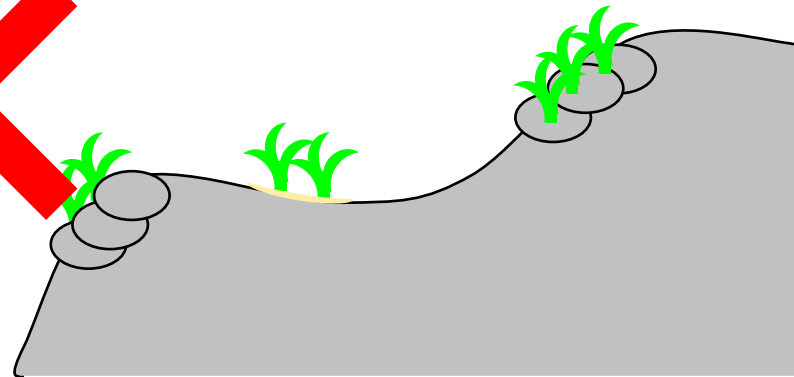
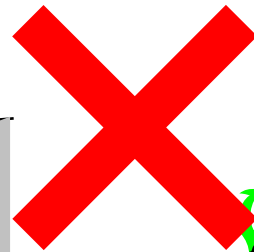
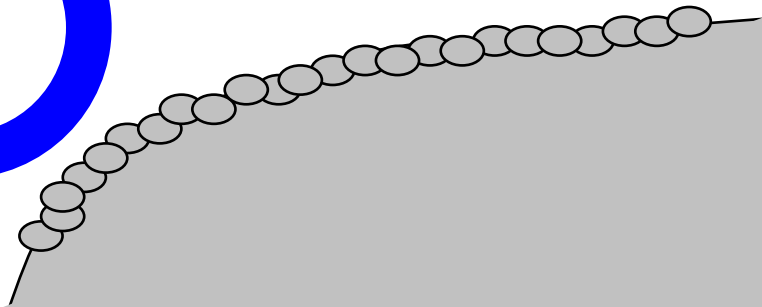
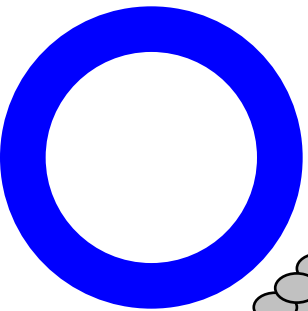
- It should be retained **without much human resource& budget.**
- Power of **flood event** has to be used effectively.

Conclusion

Cross-sectional



Longitudinal



*Thank you for your kind listening.
For detail, I will explain with my poster...*